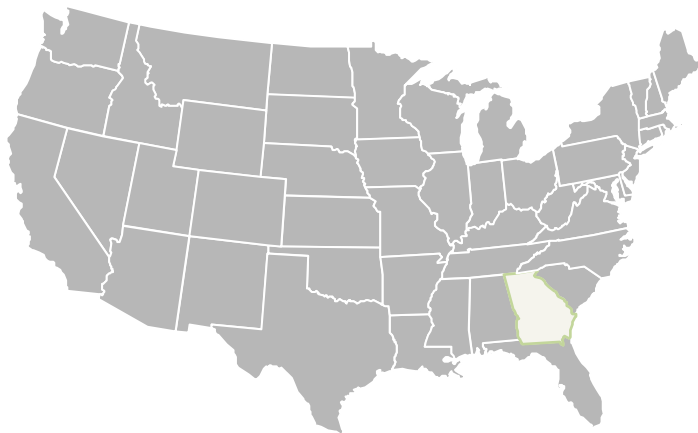




MOREHOUSE
SCHOOL OF MEDICINE



Special Session 3: Social Determinants of Health: Impact on Cancer Care-How do hospitals/clinics utilize SDoH data?

***Brian Rivers, PhD, MPH
Professor & Director, Cancer Health Equity
Institute***

Overview

- Define Social Determinants of Health and describe its relationship to health outcomes.
- Describe clinical strategies to address Social Determinants of Health.

AACR

American Association
for Cancer Research



AACR CANCER DISPARITIES PROGRESS REPORT 2020

Achieving the Bold Vision of Health Equity for Racial and
Ethnic Minorities and Other Underserved Populations

AACR.org
CancerDisparitiesProgressReport.org
#CancerDisparitiesReport

AACR American Association
for Cancer Research®
FINDING CURES TOGETHER™



Why Do U.S. Cancer Health Disparities Exist?

Complex and interrelated factors contribute to cancer health disparities in the United States. **The factors include, but are not limited to, differences or inequalities in:**

ENVIRONMENTAL FACTORS

- Air and water quality
- Transportation
- Housing
- Community safety
- Access to healthy food sources and spaces for physical activity



SOCIAL FACTORS

- Education
- Income
- Employment
- Health literacy



CULTURAL FACTORS

- Cultural beliefs
- Cultural health beliefs



BEHAVIORAL FACTORS

- Tobacco use
- Diet
- Excess body weight
- Physical inactivity
- Adherence to cancer screening and vaccination recommendations



CLINICAL FACTORS

- Access to health care
- Quality of health care



PSYCHOLOGICAL FACTORS

- Stress
- Mental health







BIOLOGICAL AND GENETIC FACTORS

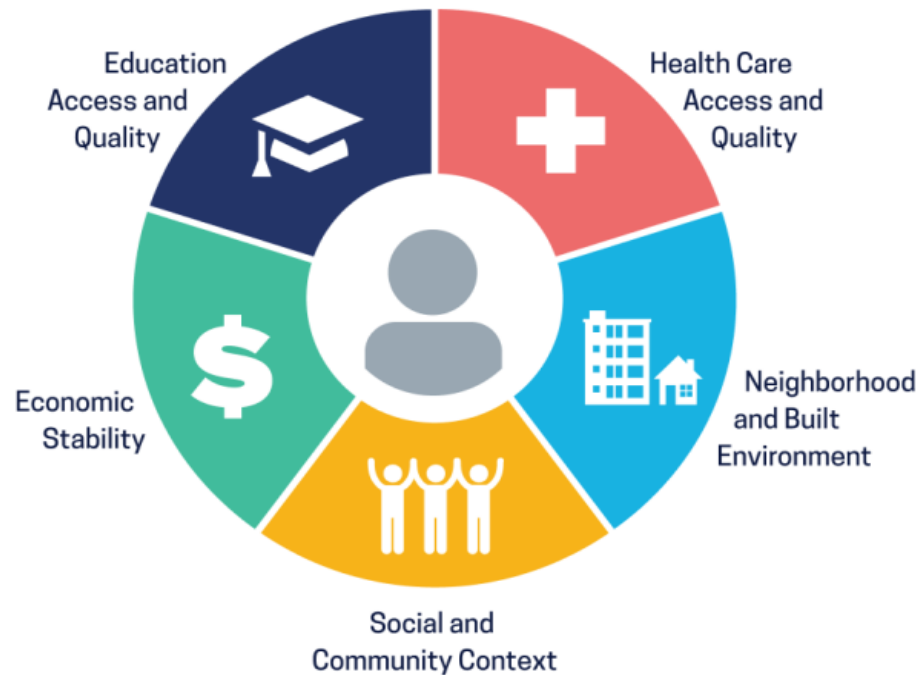


Adapted from American Association for Cancer Research (AACR) Cancer Disparities Progress Report 2020

National Institute on Minority Health and Health Disparities Research Framework

		Levels of Influence*			
		Individual	Interpersonal	Community	Societal
Domains of Influence <i>(Over the Lifecourse)</i>	Biological	Biological Vulnerability and Mechanisms	Caregiver–Child Interaction Family Microbiome	Community Illness Exposure Herd Immunity	Sanitation Immunization Pathogen Exposure
	Behavioral	Health Behaviors Coping Strategies	Family Functioning School/Work Functioning	Community Functioning	Policies and Laws
	Physical/Built Environment	Personal Environment	Household Environment School/Work Environment	Community Environment Community Resources	Societal Structure
	Sociocultural Environment	Sociodemographics Limited English Cultural Identity Response to Discrimination	Social Networks Family/Peer Norms Interpersonal Discrimination	Community Norms Local Structural Discrimination	Social Norms Societal Structural Discrimination
	Health Care System	Insurance Coverage Health Literacy Treatment Preferences	Patient–Clinician Relationship Medical Decision-Making	Availability of Services Safety Net Services	Quality of Care Health Care Policies
Health Outcomes		 Individual Health	 Family/ Organizational Health	 Community Health	 Population Health

Social Determinants of Health



Social Determinants of Health

Copyright-free

 Healthy People 2030

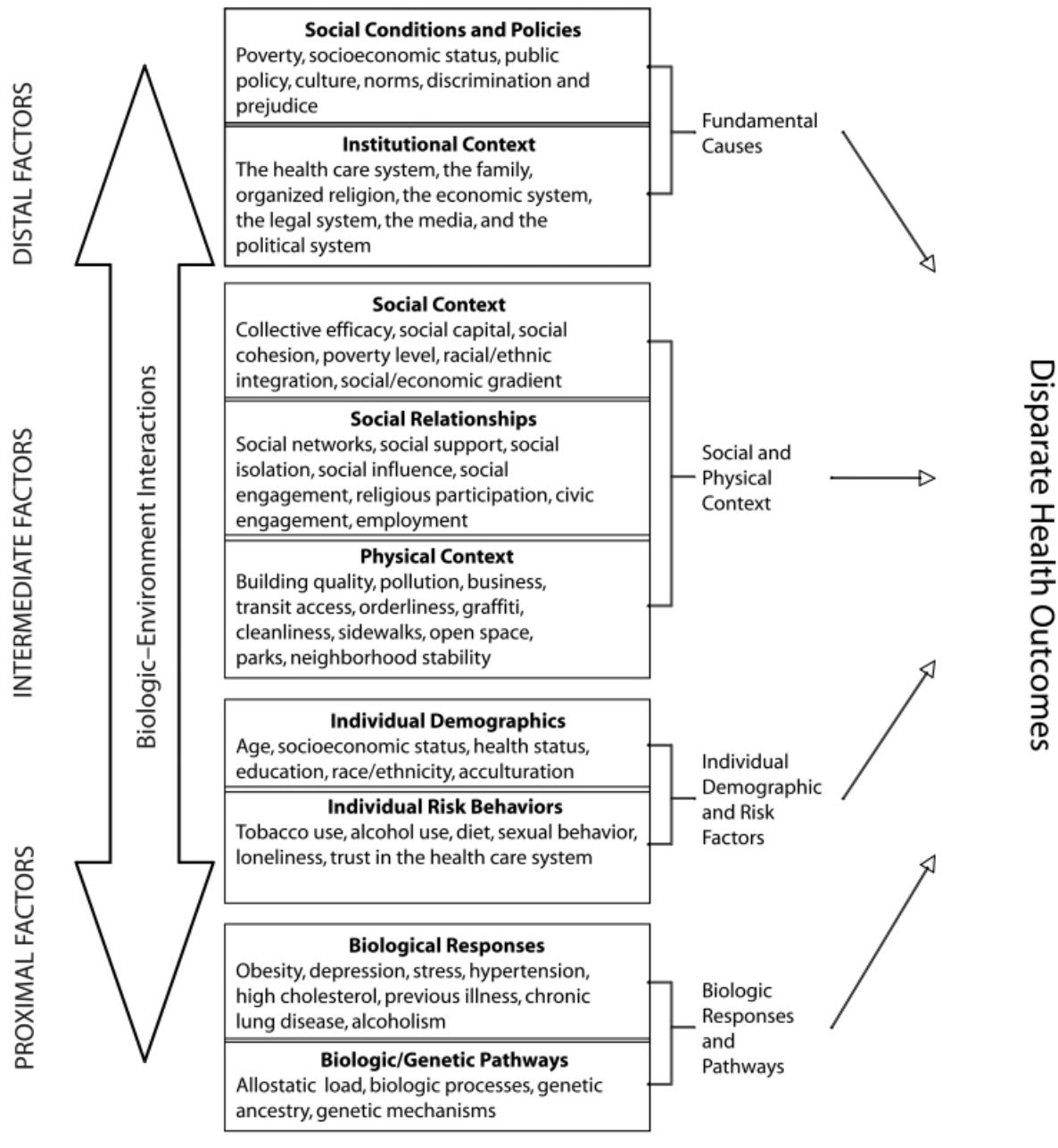
Social Determinants of Health

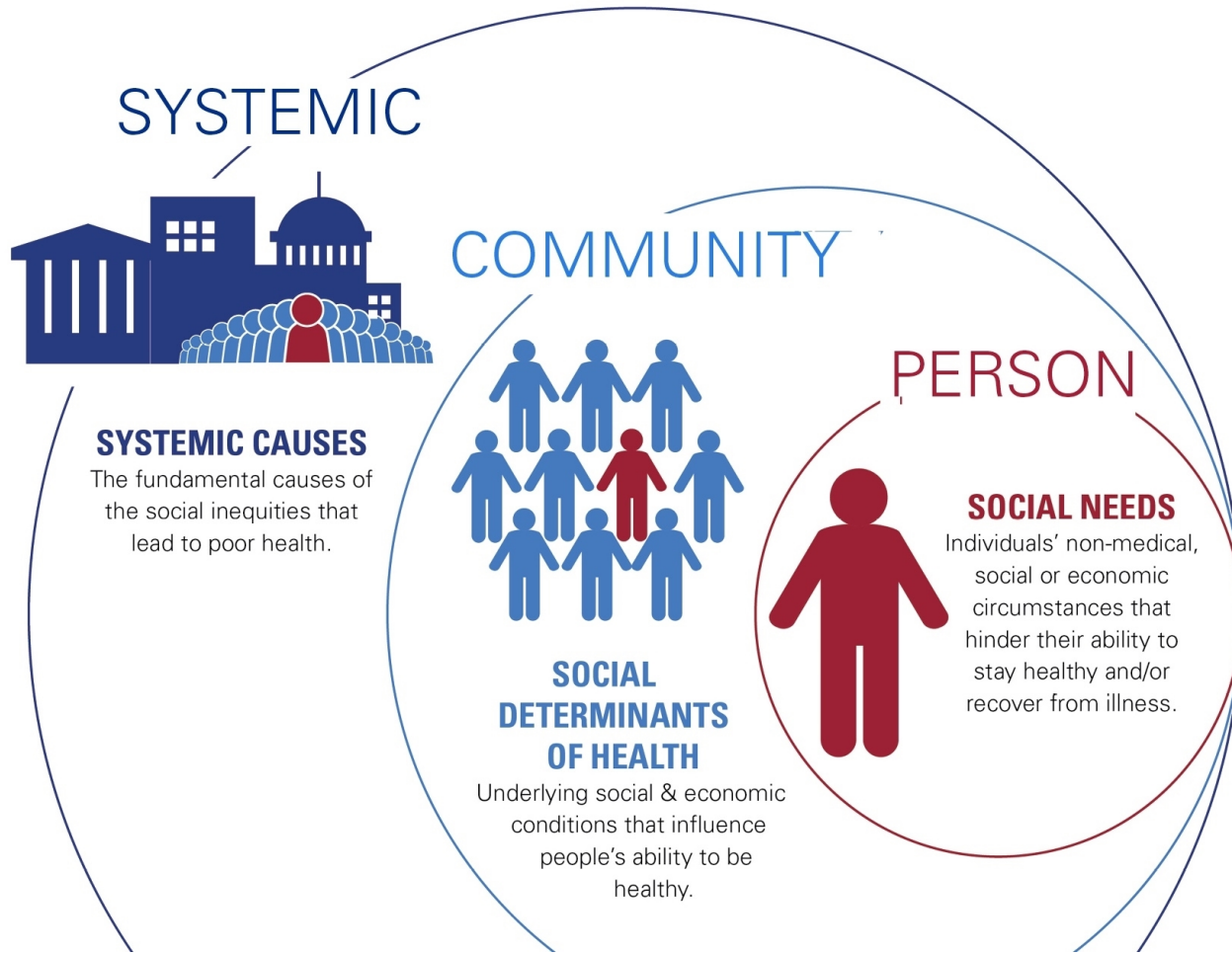
Social determinants of health (SDOH) are the conditions in the environments where people are born, live, learn, work, play, worship, and age that affect a wide range of health, functioning, and quality-of-life outcomes and risks.

Upstream Factors



Downstream Factors





Societal Factors That Influence Health

American Hospital Association

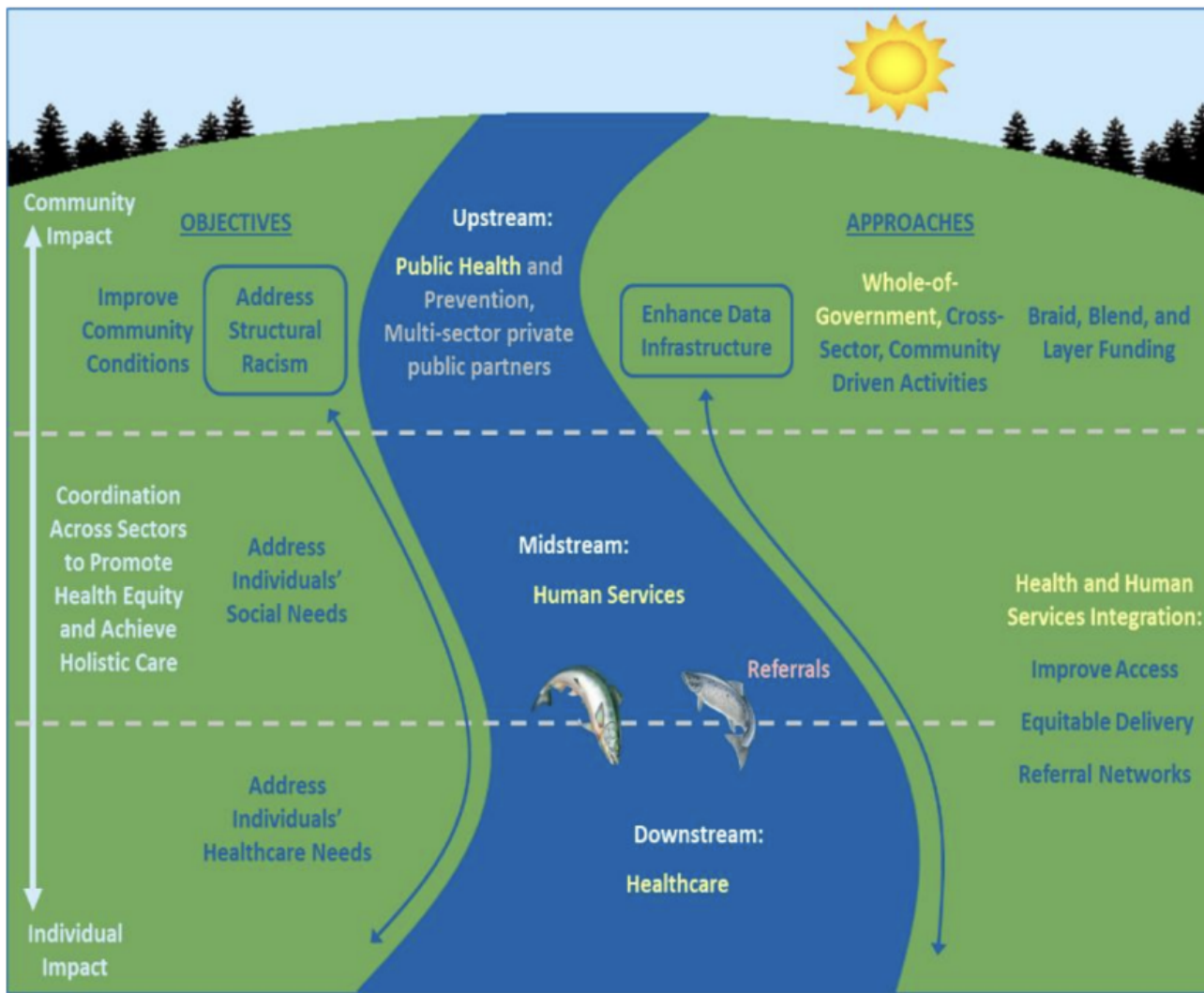


Figure 2. The Social Determinants of Health (SDOH) Ecosystem

Source: Office of the Assistant Secretary for Planning and Evaluation, U.S. Department of Health and Human Services.

- *“Estimated 20% of health outcomes can be attributed to clinical care, while Social Determinants of Health account for as much as 50% of the county-level variation in health outcomes.”*

HHS’s Strategic Approach to Addressing Social Determinants of Health to Advance Health Equity – At a Glance

Social Determinants of Health: Data Collection



- NIH NIMHD PhenX Social Determinants of Health Assessments Collection
- National Cancer Policy Forum, National Academy of Medicine, and other sectors of federal government continue to convene stakeholders to develop a consensus on standard language and definitions for social determinants of health and health outcomes.

New Social Determinants of Health protocols - click here!

What is the PhenX Toolkit?

- A Web-based catalog of recommended measurement protocols
- Selected by experts
- To include in studies with human participants

Research Domains

Browse Protocols Tree

Who's Using PhenX



Substance Abuse and Addiction



Tobacco Regulatory Research



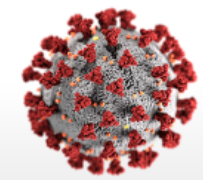
Mental Health Research



Blood Sciences Research



Social Determinants of Health



COVID-19 Research



Toolkit Guidance




How to Cite PhenX

Search:

[Home](#) » [Browse Collections](#) » [Social Determinants of Health Collections](#)

Social Determinants of Health Collections

[Social Determinants of Health Project](#)
[Social Determinants of Health Collection](#)

Social Determinants of Health Research 

Release Date: 5/11/20

[View Supplemental Information](#)  [View Scope](#)

[View Social Determinants of Health WG Roster](#)

Core Collection

[+ Add to My Toolkit](#) [Social Determinants of Health: Core](#)

Specialty Collections

[+ Add to My Toolkit](#) [Individual Social Determinants of Health](#)

[+ Add to My Toolkit](#) [Structural Social Determinants of Health](#)

Advancing Healthcare Equity: Collaborative Strategies to Address Social Determinants of Health at Grady

Acknowledgements:

Roland Matthews, MD

Pooja Mishra, MBA, MHA, FACHE, LSSGB

Grady **FAST FACTS**

25% OF GEORGIA
PHYSICIANS RECEIVED SOME
OF THEIR TRAINING AT GRADY

35,000
ADMISSIONS

**GRADY EMS RESPONDED
TO MORE THAN
140,000** 911 CALLS

7,000+
EMPLOYEES

1,500+
NEW CANCER
CASES YEARLY

151,000+
ED VISITS ANNUALLY
(400+/DAY)

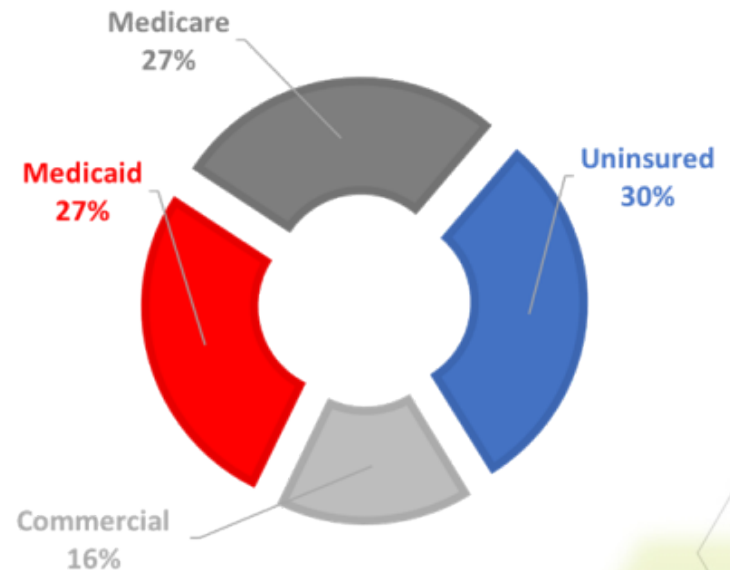
1,000+ PHYSICIANS AND RESIDENTS
THROUGH EMORY AND MOREHOUSE
PARTNERSHIPS

Staffed inpatient beds:

640 Total



PAYER MIX



GEORGIA CANCER CENTER FOR EXCELLENCE Grady



Grady's Cancer Center exists to reduce the number of lives lost to cancer through prevention and screening, treatment, research and education. The center provides services in a patient-focused manner.

ASCO QOPI[®]
Certification Program



Understand Community Needs

Social Determinants of Health Ranked #2 on list of Grady priorities

World Health Organization definition:

“The conditions in which people are born, grow, work, live, and age, and the wider set of forces and systems shaping the conditions of daily life, including economic policies and systems, development agendas, social norms, social policies, and political systems.”

Health Related Social Needs	Primary Care Center
1. Food Insecurity	25%
2. Experienced Homelessness in last 12 mo.	17% *
3. Lack of Transportation	18%
4. Hard to Pay for the Very Basics	17%

* Surveyed housing insecurity not homelessness

Source: 3 internal studies of SDOH needs among Grady patients, ranging 2018 - 2019

Strategy 1: Seek Local and National Community Partners

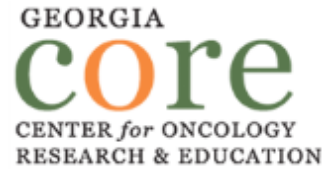
- Grant Awards:
 - Merck Foundation
 - Funded support services expansion
 - Nurse Navigators, Dietician, Exercise Physiologist
 - Morehouse School of Medicine Cancer Health Equity Institute
 - Funded NIH Navigation Programs-Cancer Care Connect and Clinical Trials and Cancer Genomic Education Program
 - Komen Atlanta
 - Funded screening services expansion to reach underserved breast population

Our Partners



ALLIANCE TO ADVANCE
PATIENT-CENTERED CANCER CARE

Supported by



MSM.edu

#MSMHealthEquity

Strategy 2: Leverage tech

Examples:

- Integrated [NCCN distress tool](#) into EHR
 - Same day referral to medical social work team
- Implemented Epic Social Determinants of Health Screen
 - Interventions for transportation, financial assistance, insurance, RX assistance, food insecurity etc.
- Standardized clinic note in EHR
- Predictive analytics to stratify risk
- Zip code data for targeted digital campaign/outreach

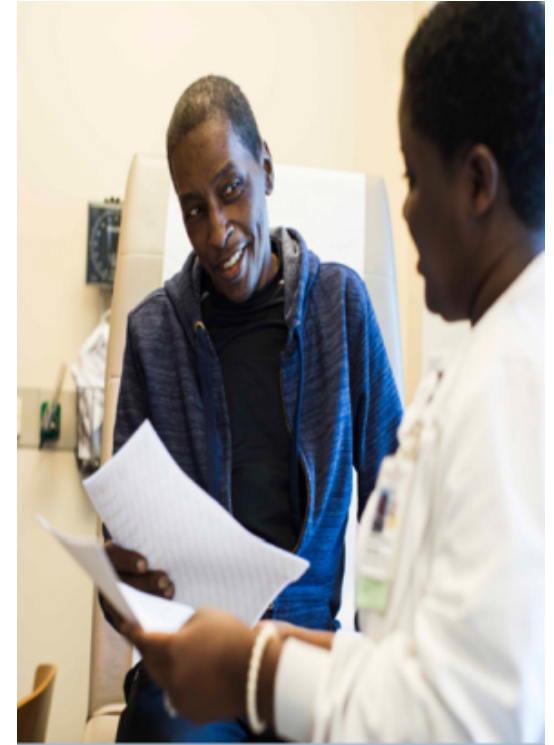
2021 Stats

2,977 distress screenings

1,517 pts.
Transportation
Assistance
\$13K

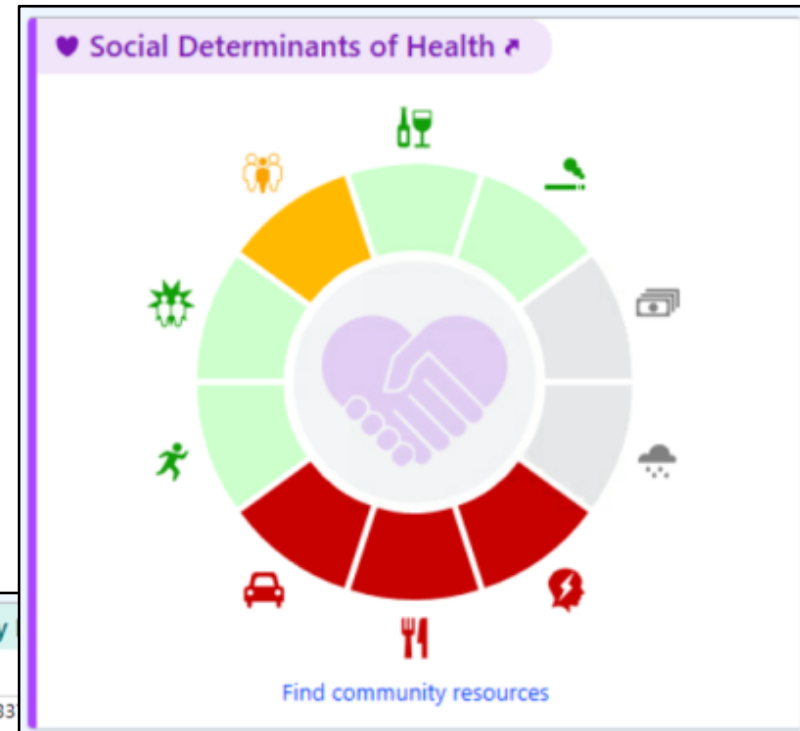
596 pts.
Housing
Assistance
\$10K

400 pts.
RX
Assistance
\$10K



Social Determinant of Health (SDOH) Screening

- Launching SDOH screening as part of social history
 - Tools available in EPIC
 - Rolling Implementation through 2023
- Domains
 - Alcohol Use
 - Tobacco Use
 - Financial Resource Strain
 - Food Insecurity
 - Transportation Needs
 - Living Arrangements
 - Intimate Partner Violence
 - OBGYN Departments Only
 - Post-Partum Depression
 - OBGYN Departments Only



Currently Recommended Community

Odyssey Family Counseling
1919 John Wesley Ave, COLLEGE PARK GA 3033
Phone: Not available
Resource for: Stress
[Find community resources](#)

Previously Recommended Community Resources [Expand All](#) [Collapse](#)

No previous recommendations

Strategy 3: Leverage people

- Nurse and Community NavigatorsDietician
- Exercise Coach
- Social Workers
- Screening Navigators
- Patient Family Advisory Council
- Research Coordinators
- Consultants & Partners
 - [Planetree](#)
 - Georgia State University Center for Adult Literacy
 - Unconscious Bias Training

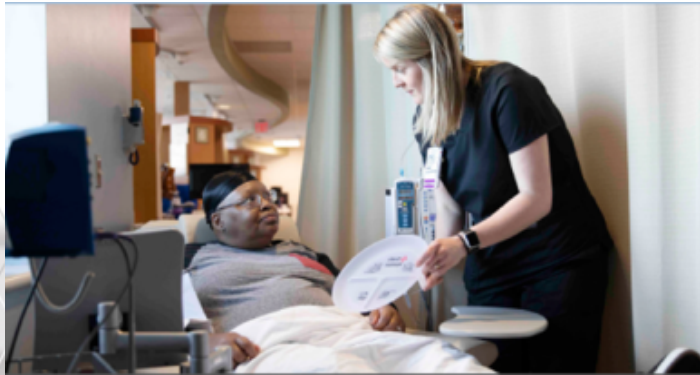
RN Navigators

2021 Stats:

- Improved breast treatment adherence by 14%
 - Increased number of encounters by 33%
- Increased adherence resulted in higher volumes
 - Associated with positive operating margins
- <https://meetinglibrary.asco.org/record/192879/abstract>



Dietician – On Site



- Manages side effects, weight change, and food insecurity
- Provides nutrition education
- Connects patients to community food resources

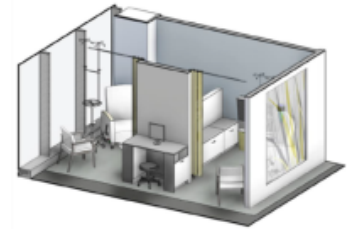
Partner to address social needs of individual patients

Spearheaded by Grady, **Food as Medicine** is a collaborative program involving key partners to address both food insecurity and chronic disease among Grady's patients, with benefits that extend to children, families, visitors and staff.



Patient Family Advisory Council

- Partners
- What's important?
- Our why



GSU Health Literacy Project

Chunk

**Divide the information
into smaller parts**

Check

**Confirm patient
understanding**



THANK YOU!
QUESTIONS?